

# *Majesty on the Avenue*

4717 ST. CHARLES AVENUE • 9 BEDROOMS, 8 ½ BATHS

LIVING AREA: 14,000 SQ. FT. • LOT SIZE: 200' 8" X 186' 1" • TOTAL: 20,958 SQ FT



## *The finest home in New Orleans...*

In 1903, cotton industry mogul William Perry Brown pledged to build “the city’s finest residence”\* as a wedding gift for his new bride. One year later, the famed architectural group of Favrot & Livaudais completed their masterpiece, and today, Brown’s fortress remains unparalleled.

The home crowns the most prominent stretch of renowned St. Charles Avenue where antique streetcars still ride. During carnival, Mardi Gras parades pass just three blocks away, allowing for the perfect, unencumbered vantage point. Constructed of a masonry brick and wood frame and encased in a limestone veneer from the McDermott Stone Company quarries of Ohio, this majestic home embodies the Richardson Romanesque style of the early 20th century. In 1987-88, the home was renovated by architect Leonard Salvato with interior design by Lucile Andrus and landscape architecture by René L. J. Fransen. The home was outfitted with a host of top-of-the-line conveniences, while maintaining its architectural integrity and character. Encircled in historic oaks, the handsome home lies at the ascent of a broad, 14-step granite stair.

## ELEANOR FARNSWORTH

CRS, GRI, BRC

Historic Residential Specialist

Office: 891-1142 Home: 891-9023

[www.eleanorfarnsworth.com](http://www.eleanorfarnsworth.com)

[sold@eleanorfarnsworth.com](mailto:sold@eleanorfarnsworth.com)

\*Daily Picayune, New Orleans, September 1, 1903

*Upon entering the home,* one is drawn into an expansive hallway which opens all at once to the exquisite living room, library, dining room, and grand stair.

The hallway is crowned at its farthest end by a magnificent stone fireplace, graced in Romanesque designs, resonating from the home's exterior.

The fireplace is one of eleven in the home, all built in mixes of onyx, polished marble, and dressed stone.



The entire expanse of rooms is graced with 13-foot ceilings, all contoured in an array of *breathtaking columns and arches.*

The hardwood floors of the entrance hallway are inlaid with parquet designs, set off by the natural light through the parlor windows and the magnificent painted glass windows above the grand stair. The painted flower bouquets are graced with daisies--marguerites in French--which were included as a tribute to Brown's wife as well as his mother, both named Marguerite. These delicate designs are further illuminated by a crystal chandelier.

Throughout the home, the flooring is embellished with a mix of poplar, mahogany, oak and cypress finishes.

The living room and library boast *intricate hand-carved millwork*, including rich crown molding in egg-and-dart motifs, wood-paneling, and Beaux Arts style plaster garlands enlacing the ceilings. Both rooms are anchored by original fireplaces with classical ornaments, echoing that of the surrounding walls and ceilings.



Living Room



Library



Dining Room

## *The dining room is easily the largest on the Avenue*

comfortably seating 16 or accommodating a grand buffet for entertaining on its largest scale. This inviting room is enveloped in rich hues, from the dark-wood paneled ceiling to the extraordinary fireplace to its regally swept English cotton drapes.

An exquisite powder room and adjoining vanity are accented in soft, gilded paints and polished marble with a Sherrill Wagoner sink and faucet.

*Original pocket doors* mark the entrance of every main room on the home's first and second floors, thus creating a flexible layout for entertaining on every scale as well as every day living.

Retractable louvered shutters are custom-fitted to every window, and all first floor windows have triple hung interior shutters.

The home has been wired for in-wall multi-media systems including a McIntosh sound system. The den is wired for surround sound with remote speakers in the dining room, library and breakfast room. The bedrooms on the second floor are also wired for sound with built-in speakers.

Custom, modern lighting abounds, including automatic lights in the powder room and closets, all custom designed by Kline Bettridge of New York. A mixture of recessed incandescent, hidden spot lighting, suspended pendants and chandeliers combine to best reflect the home's most opulent features.

All drapes and appliances remain.

*The substantial gourmet kitchen* is flanked with hardwood cabinetry and encompasses both a large breakfast area, walk-in pantry, and a generous wet bar.

Kitchen amenities include:

- original marble and brass sink
- Vulcan Range with 6 burners and indoor grill
- Sub Zero refrigerator
- Sub Zero freezer
- Thermidor double ovens
- commercial Jennair single oven
- flat screen television on articulated arm
- large butcher block island
- two garbage disposals

The wet bar is surrounded by custom shelves, and is accessible from the den as an extension of the entertaining area as needed. Amenities include a Scotsman refrigerator and icemaker and an original marble sink.



Kitchen



*At the top of the grand stair lies a generous sitting area,*  
to which each of the bedrooms opens onto.

The master bedrooms facing the Avenue offer floor-to-ceiling windows which open onto the vast balcony in the canopy of oaks. These rooms are connected to spacious walk-in closets with custom storage and luxurious marble bathrooms, one of which includes a steam shower. The remaining bedrooms on this floor each offer lofty views, plenty of closet space, custom display shelves, ceiling fans, and billowing drapes, setting off the sweeping 12-foot ceilings.

Eight of the nine bedrooms adjoin their own masterfully appointed bathrooms with features such as claw-foot tubs, marble tops, and walls of built-in storage.



*The fully renovated third floor* includes three additional bedrooms, a spacious recreational area with a pool table, a study, gym, and a large, walk-in storage closet. There are eighteen windows on this floor, allowing for impressive natural lighting and views of downtown New Orleans over the tree tops.



Terrace/Pool

*An abundance of professional landscaped topiaries* and local and exotic flora decorate the property. All are maintained by a remote-controlled irrigation system.

Doors from the den, family room and kitchen open onto the wide blue slate terrace. The terrace was added in 1987, and the owners took care to build it from the stone of the same quarry as that of the home's exterior, some 100 years earlier. A stone gazebo with wet-bar, refrigerator and sink lies atop the terrace, and the area is serviced with outdoor speakers.

Steps lead to a private, dark-stoned hot tub and further to a tranquil in-ground pool that is heated as well. The area is embraced by hollies, palms, Japanese red maples, sweet olives, gardenias, and fountain plants.

Also on the grounds are an outdoor shower and an outdoor grill with a natural gas outlet. A system of copper pipes, gutters and downspouts lead to a reconditioned subsurface drainage system.

## *The three-car garage*

is accessed via an electric gate on the side street, which allows for entirely private entry and exit. The gates are operated through the phone/intercom system inside the home.

A hand-painted interior elevator leads from the garage to all three floors. There is also parking for two additional cars in the drive.

The basement area is a 5000+ square-foot and includes a vast wine storage and food staging area, a workshop, a utility service room, another storage room, and a changing room and bathroom for the pool.

## *Additional Features*

New roof installed, 2000

Double water heater sets on first and second floors

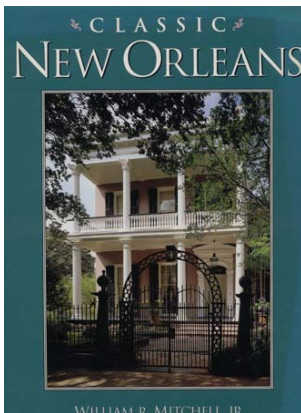
5-zoned central HVAC system

Generac 25 KW generator

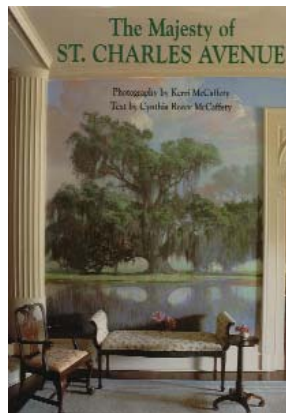
Substantial laundry room with washer and dryer on second floor

Walk-in cedar linen closet on second floor

## *Featured in...*



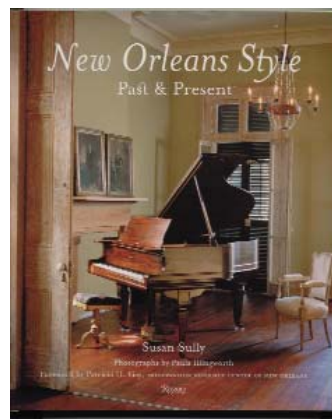
*Classic New Orleans,*  
William R. Mitchell Jr.



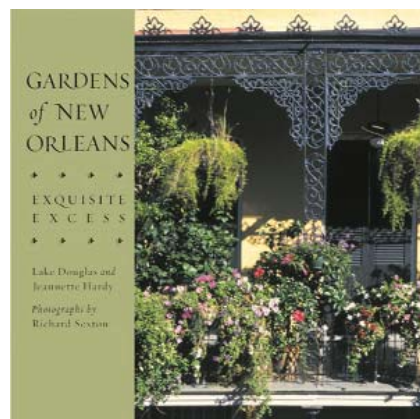
*The Majesty of St. Charles Avenue*  
Kerri McCaffety and Cynthia Reece McCaffety



*New Orleans Houses*  
Lloyd Vogt

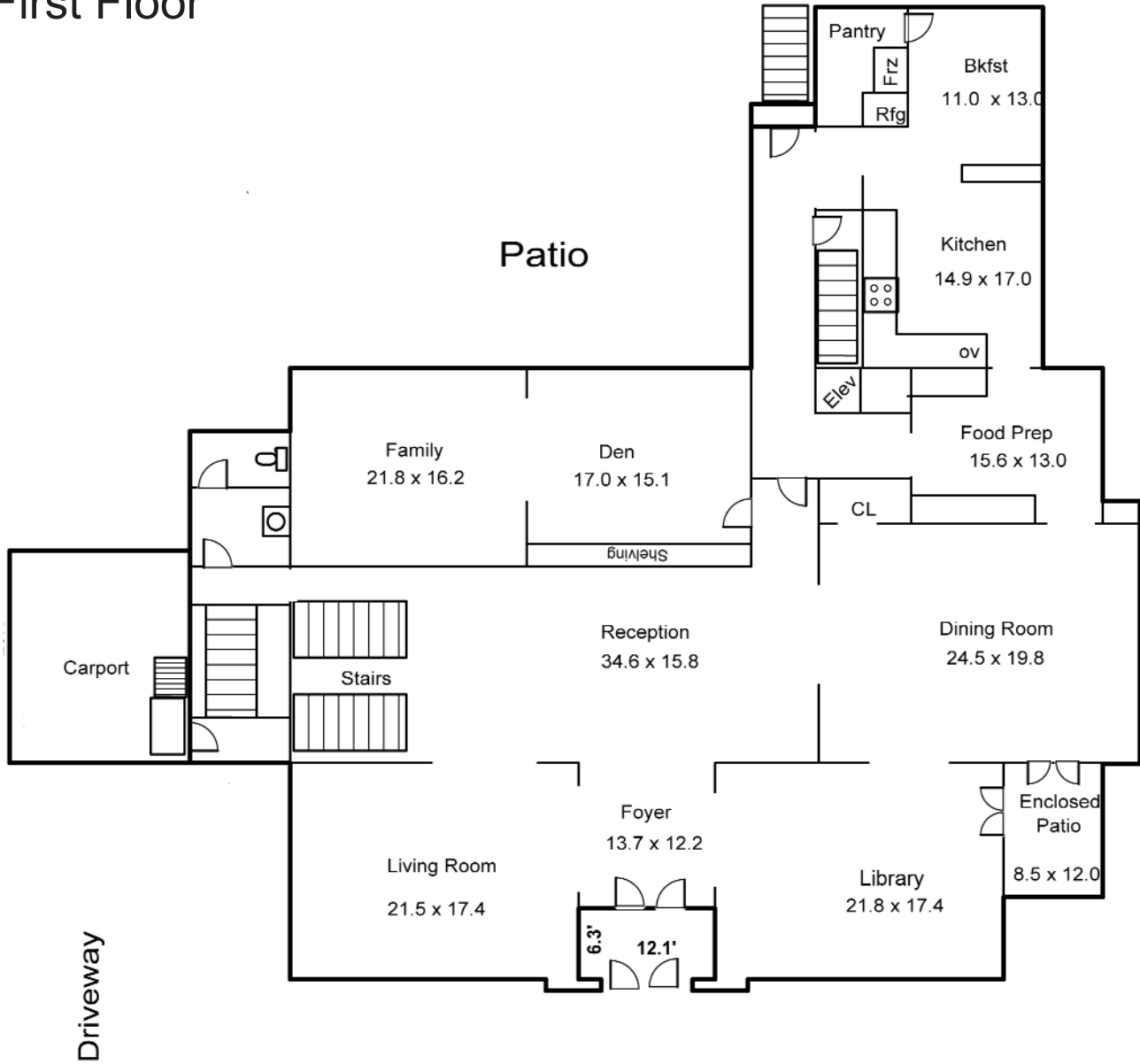


*New Orleans Style: Past and Present*  
Susan Sully

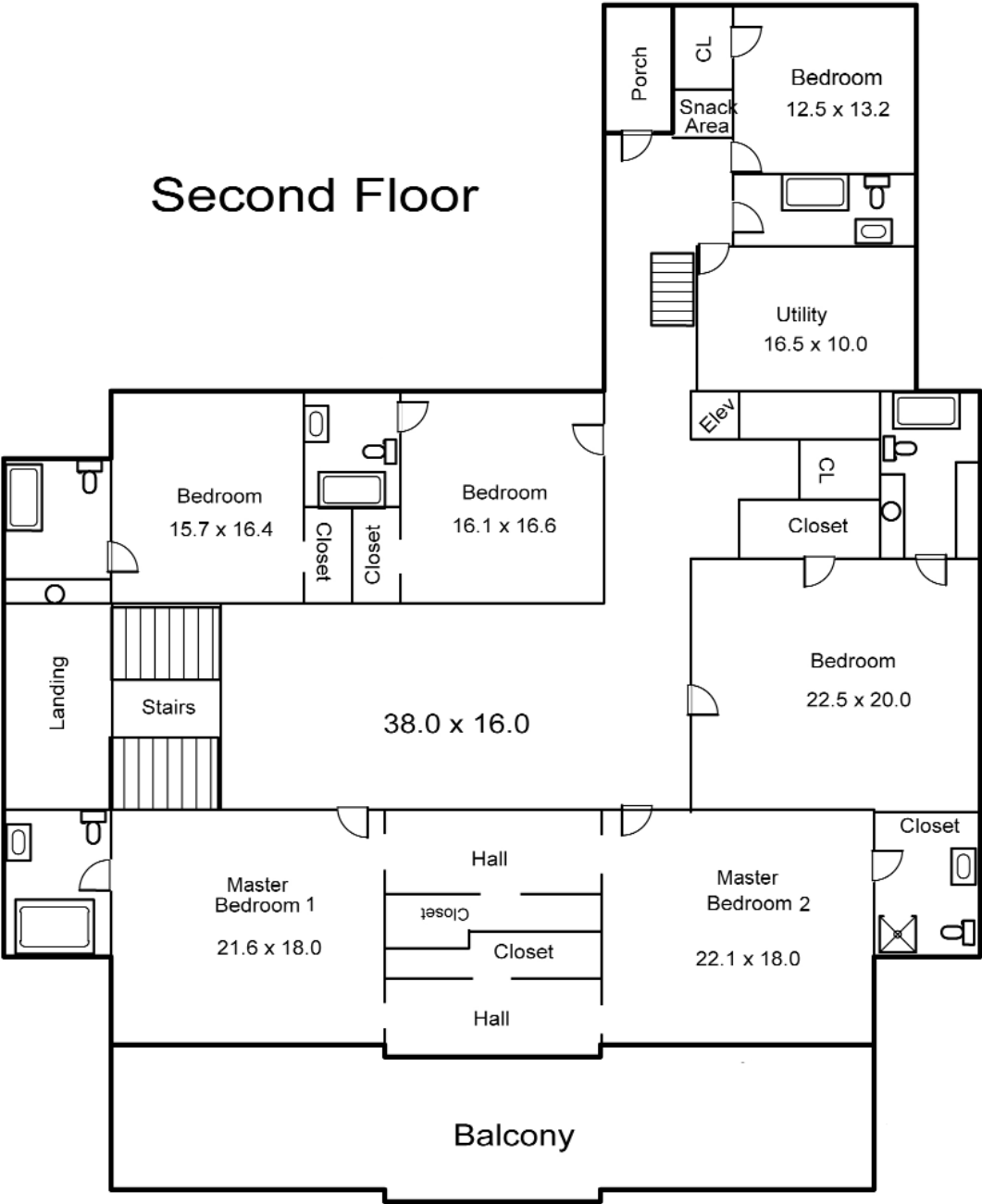


*Gardens of New Orleans: Exquisite Excess*  
Lake Douglas and Jeannette Hardy

# First Floor

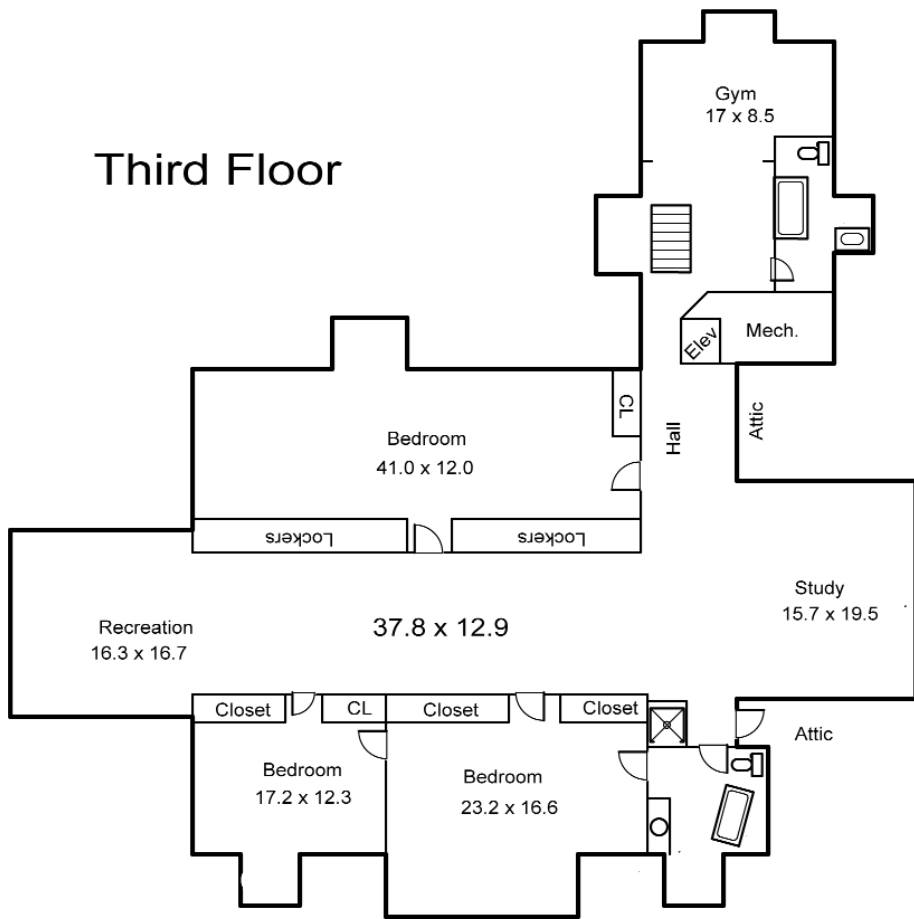


# Second Floor

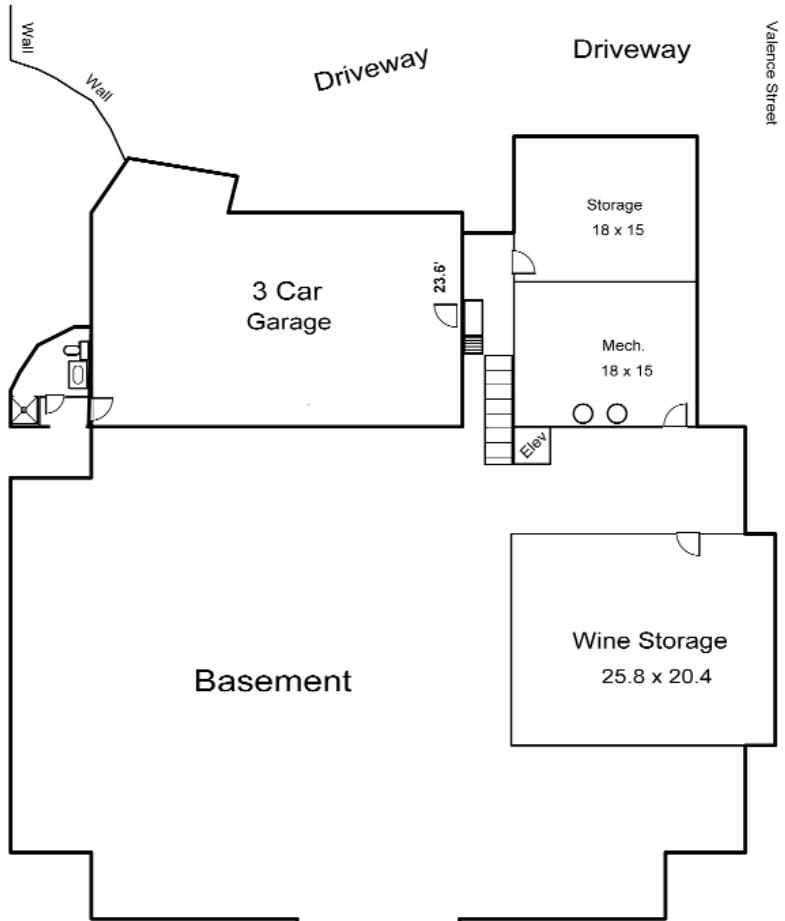


*floorplans not to scale*

# Third Floor



# Basement/Drives



504.891.6400

